

Collet Chucks and Collets



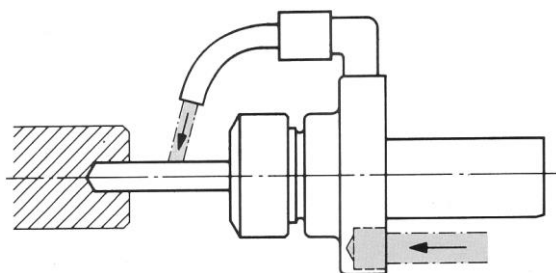
At a glance

- For ANGST Flex or ESX (ER) Collets
- Available with:
 - Flex: cylindrical shanks
 - ESX (ER): all usual shanks e.g. cylindrical, cylindrical with flat (Weldon), DIN 69880 / VDI 3425, SK DIN 69871, BT (Japan Standard MAS 403), ISO, Caterpillar and Morse taper
- Heavy-duty and durable Swiss quality products

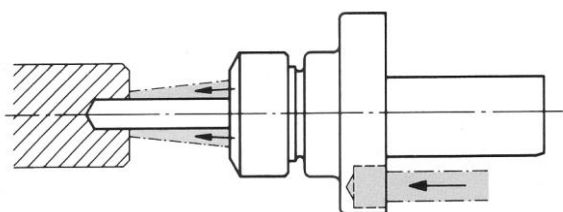
ANGST Flex Collet Chucks and Collets

To enable gripping the drill shanks with a variety of different shank dimensions, we have developed a collet type with the highest possible gripping capacity and the smallest possible dimensions (Flex). In order for the collets to be used for other applications, the collet chucks are available with different shank dimensions.

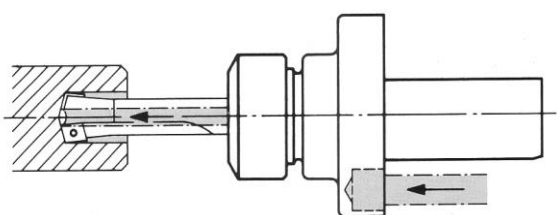
Coolant supply options for collet chucks with shanks as per VDI 3425-2 (DIN 69880/1)



Coolant through external coolant pipe



Coolant through collet slots



Coolant through the centre (for „U“ drills etc.) without loss of pressure

Collet chuck Type ANGST FLEX 1 – Gripping capacity $\varnothing A = 2 - 6.5$, Shank cylindrical

$\varnothing d \times l$	No	$\varnothing B$	C	D	E	G	s
14 x 25	33-1001	7	21	37	23	M6	22
$\frac{5}{8}$ " x 30	33-1002	7	21	42	23	M6	22
$\frac{3}{4}$ " x 30	33-1003	7	21	42	23	M6	22
$\frac{3}{4}$ " x 50	33-1004	7	21	62	23	M6	22
20 x 30	33-1005	7	21	42	23	M6	22
20 x 50	33-1006	7	21	62	23	M6	22
25 x 50	33-1007	7	21	62	23	M6	22
1" x 50	33-1008	7	21	62	23	M6	22

Collets capacities (Fig. A)			
No.	$\varnothing D$	No.	$\varnothing D$
33-1625	$\varnothing 2.5-2$	33-1650	$\varnothing 5-4$
33-1630	$\varnothing 3-2.5$	33-1660	$\varnothing 6-5$
33-1635	$\varnothing 3.5-3$	33-1665	$\varnothing 6.5-5.5$
33-1640	$\varnothing 4-3.5$		

Set collets	No.	$\varnothing D$
7 collets as per list (33-1625 to 33-1665)	33-1600	$\varnothing 2.5-2$ to $\varnothing 6.5-5.5$

Collet chucks Type ANGST FLEX 2 – Gripping capacity $\varnothing A = 3 - 12$, Shank cylindrical

$\varnothing d \times l$	No	$\varnothing B$	C	D	E	G	s
$\frac{5}{8}$ " x 30	33-2002	9	23	44	29	M8	32
$\frac{3}{4}$ " x 30	33-2003	12	23	44	29	M8	32
$\frac{3}{4}$ " x 50	33-2004	12	23	64	29	M8	32
20 x 30	33-2005	12	23	44	29	M8	32
20 x 50	33-2006	12	23	64	29	M8	32
25 x 50	33-2007	12	23	64	29	M8	32
1" x 50	33-2008	12	23	64	29	M8	32

Collet capacities (Fig. A)			
No.	$\varnothing D$	No.	$\varnothing D$
33-2635	$\varnothing 3.5-3$	33-2680	$\varnothing 8-7$
33-2640	$\varnothing 4-3.5$	33-2690	$\varnothing 9-8$
33-2650	$\varnothing 5-4$	33-2700	$\varnothing 10-9$
33-2660	$\varnothing 6-5$	33-2710	$\varnothing 11-10$
33-2670	$\varnothing 7-6$	33-2720	$\varnothing 12-11$

Set collets	No.	$\varnothing D$
10 collets as per list (33-2635 to 33-2720)	33-2600	$\varnothing 3.5-3$ to $\varnothing 12-11$

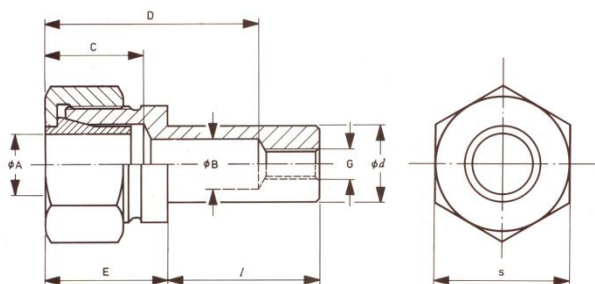
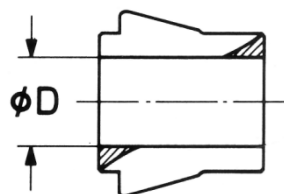


Fig. A



Collet chucks Type ANGST FLEX 3 – Gripping capacity $\varnothing A = 4 - 16$, Shank cylindrical

$\varnothing d \times l$	No	$\varnothing B$	C	D	E	G	s
$\frac{3}{4}'' \times 30$	33-3003	12	31	47	37	M10	41
$\frac{3}{4}'' \times 50$	33-3004	12	31	67	37	M10	41
20 x 30	33-3005	12	31	47	37	M10	41
20 x 50	33-3006	12	31	67	37	M10	41
25 x 50	33-3007	16	31	67	37	M10	41
1" x 50	33-3008	16	31	67	37	M10	41

Collets capacities (Fig. A)			
No.	$\varnothing D$	No.	$\varnothing D$
33-3650	$\varnothing 5-4$	33-3700	$\varnothing 10-9$
33-3660	$\varnothing 6-5$	33-3715	$\varnothing 11.5-10$
33-3670	$\varnothing 7-6$	33-3730	$\varnothing 13-11.5$
33-3680	$\varnothing 8-7$	33-3745	$\varnothing 14.5-13$
33-3690	$\varnothing 9-8$	33-3760	$\varnothing 16-14.5$

Set collets	No.	$\varnothing D$
10 Collets as per list (33-3650 to 33-3760)	33-3600	$\varnothing 5-4$ to $\varnothing 16-14.5$

Collet chucks Type ANGST FLEX 4 – Gripping capacity $\varnothing A = 6 - 20$, Shank cylindrical

$\varnothing d \times l$	No	$\varnothing B$	C	D	E	G	s
25 x 50	33-4007	16	34	72	42	M10	46
1" x 50	33-4008	16	34	72	42	M10	46
30 x 60	33-4009	20	34	82	42	M10	46
1 $\frac{1}{4}'' \times 60$	33-4010	20	34	82	42	M10	46
40 x 70	33-4012	20	34	92	42	M10	46

Collets capacities (Fig. A)			
No.	$\varnothing D$	No.	$\varnothing D$
33-4670	$\varnothing 7-6$	33-4740	$\varnothing 14-12$
33-4680	$\varnothing 8-7$	33-4760	$\varnothing 16-14$
33-4690	$\varnothing 9-8$	33-4780	$\varnothing 18-16$
33-4700	$\varnothing 10-9$	33-4800	$\varnothing 20-18$
33-4720	$\varnothing 12-10$		

Set collets	No.	$\varnothing D$
9 Collets as per list (33-4670 to 33-4800)	33-4600	$\varnothing 7-6$ to $\varnothing 20-18$

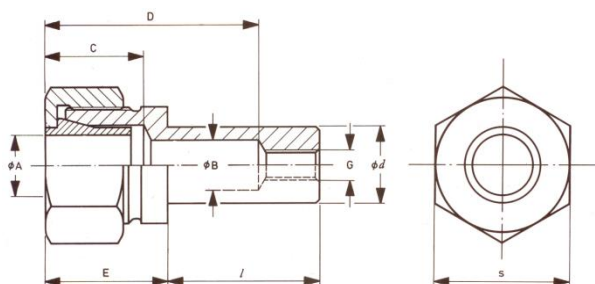
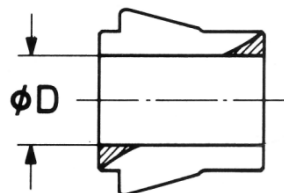


Fig. A



Collet chucks Type ANGST FLEX 5 – Gripping capacity $\varnothing A = 7 - 28$, shank cylindrical

$\varnothing d \times l$	No.	$\varnothing B$	C	D	E	G	s
1" x 50	33-5008	16	38	82	48	M10	60
30 x 60	33-5009	20	38	92	48	M10	60

No.	$\varnothing D$	No.	$\varnothing D$
33-5680	$\varnothing 8-7$	33-5780	$\varnothing 18-16$
33-5690	$\varnothing 9-8$	33-5800	$\varnothing 20-18$
33-5700	$\varnothing 10-9$	33-5820	$\varnothing 22-20$
33-5720	$\varnothing 12-10$	33-5840	$\varnothing 24-22$
33-5740	$\varnothing 14-12$	33-5860	$\varnothing 26-24$
33-5760	$\varnothing 16-14$	33-5880	$\varnothing 28-26$

Set collets	No.	$\varnothing D$
12 Collets as per list (33-5680 to 33-5880)	33-5600	$\varnothing 8-7$ to $\varnothing 28-26$

Collets capacities (Fig. A)

Collet chucks Type ANGST FLEX 6 – Gripping capacity $\varnothing A = 8 - 34$, shank cylindrical

Collets capacities (Fig. A)			
No.	$\varnothing D$	No.	$\varnothing D$
33-6690	$\varnothing 9-8$	33-6820	$\varnothing 22-20$
33-6700	$\varnothing 10-9$	33-6840	$\varnothing 24-22$
33-6720	$\varnothing 12-10$	33-6860	$\varnothing 26-24$
33-6740	$\varnothing 14-12$	33-6880	$\varnothing 28-26$
33-6760	$\varnothing 16-14$	33-6900	$\varnothing 30-28$
33-6780	$\varnothing 18-16$	33-6920	$\varnothing 32-30$
33-6800	$\varnothing 20-18$	33-6940	$\varnothing 34-32$

Set collets	No.	$\varnothing D$
14 collets as per list (33-6690 to 33-6940)	33-6600	$\varnothing 9-8$ to $\varnothing 34-32$

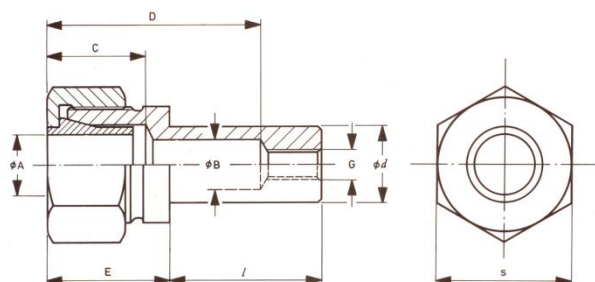
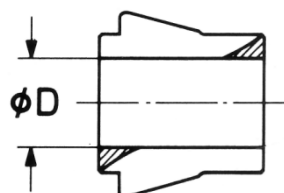


Fig. A



Collet chucks Type ESX 12 (ER 11) – Gripping capacity $\phi K = 0.5 - 7$

Shank	$\phi d \times l$	No.	ϕA	B	C	G
Cylindrical Fig. 1	14 x 25	38-1051	-	30	40	-
	$\frac{3}{4}'' \times 50$	38-1054	-	30	40	-
	20 x 30	38-1055	-	30	40	-
	20 x 50	38-1056	-	30	40	-
VDI 3425 Fig. 2	16 x 32	38-1463	40	52	49	-
	30 x 55	38-1065	68	49	49	-
BT Fig. 3	BT 35	38-1265	53	60	40	M12

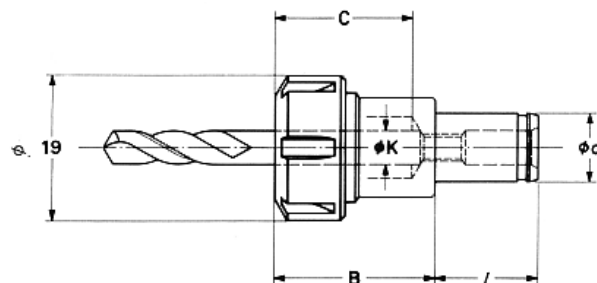


Fig. 2

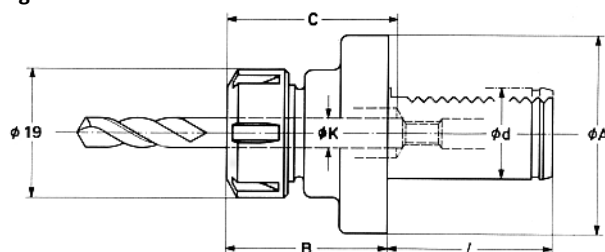


Fig. 3

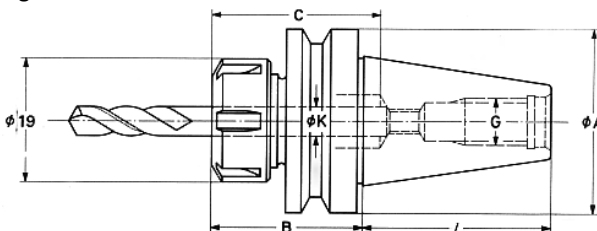


Fig. 4

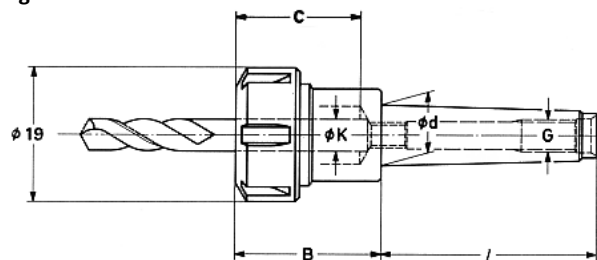


Fig. B

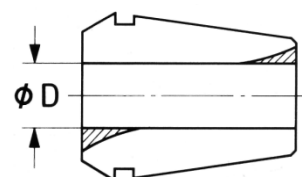


Fig. 1

Collets capacities (Fig. B)			
No.	ϕD	No.	ϕD
38-1610	$\phi 1-0.5$	38-1640	$\phi 4-3$
38-1615	$\phi 1.5-1$	38-1650	$\phi 5-4$
38-1620	$\phi 2-1.5$	38-1660	$\phi 6-5$
38-1625	$\phi 2.5-2$	38-1670	$\phi 7-6$
38-1630	$\phi 3-2.5$		

Set collets	No.	ϕD
9 collets as per list (38-1610 to 38-1670)	38-1500	$\phi 1-0.5$ to $\phi 7-6$

Collet chucks Type ESX 20 (ER 20) – Gripping capacity $\phi K = 0.5 - 13$

Shank	$\phi d \times l$	No.	ϕA	B	C	G
Cylindrical Fig. 5	$\frac{5}{8}'' \times 30$	38-2052	-	30	40	-
	$\frac{3}{4}'' \times 30$	38-2053	-	30	40	-
	$\frac{3}{4}'' \times 50$	38-2054	-	30	40	-
	20 x 30	38-2055	-	30	40	-
	20 x 50	38-2056	-	30	40	-
	25 x 50	38-2057	-	44	40	-
1" x 50	38-2058	-	44	40	-	
VDI 3425 Fig. 6	16 x 32	38-2463	40	51	48	-
	20 x 40	38-2064	50	49	49	-
	30 x 55	38-2065	68	49	49	-
with flat	16 x 50	38-2085	-	44	40	-
	20 x 50	38-2086	-	44	40	-
	25 x 50	38-2087	-	36	60	-
BT Fig. 7	BT 40	38-2266	63	60	60	M16
Morse taper Fig. 8	MK 2	38-2452	-	50	40	M10
	MK 3	38-2453	-	50	60	M12

Collets capacities (Fig. B)			
No.	ϕD	No.	ϕD
38-2610	$\phi 1-0.5$	38-2670	$\phi 7-6$
38-2615	$\phi 1.5-1$	38-2780	$\phi 8-7$
38-2620	$\phi 2-1.5$	38-2790	$\phi 9-8$
38-2625	$\phi 2.5-2$	38-2700	$\phi 10-9$
38-2630	$\phi 3-2.5$	38-2710	$\phi 11-10$
38-2640	$\phi 4-3$	38-2720	$\phi 12-11$
38-2650	$\phi 5-4$	38-2730	$\phi 13-12$
38-2660	$\phi 6-5$		

Set collets	No.	ϕD
15 collets as per list (38-2610 to 38-2730)	38-2500	$\phi 1-0.5$
		bis
		$\phi 13-12$

Fig. 5

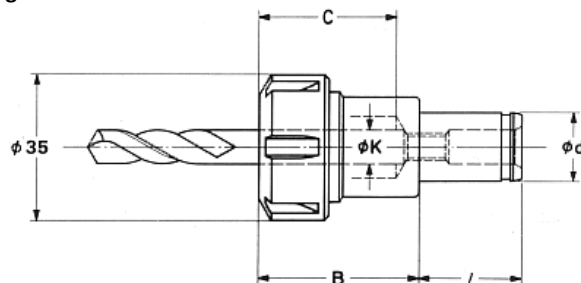


Fig. 6

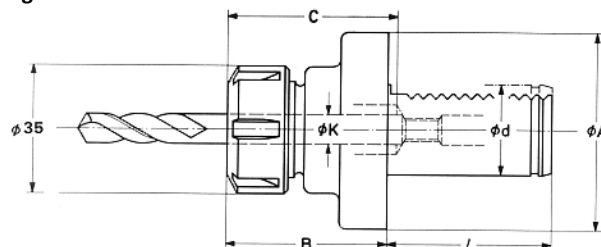


Fig. 7

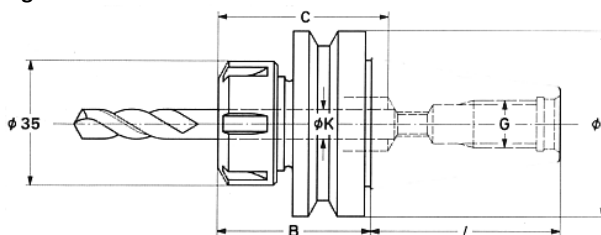


Fig. 8

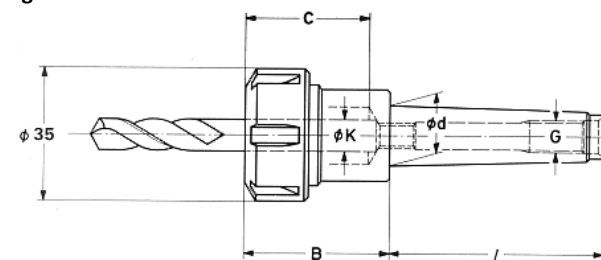
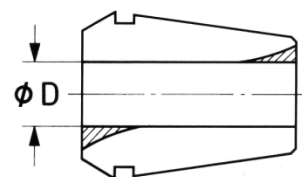


Fig. B



Collet chucks Type ESX 25 (ER 25) – Gripping capacity $\phi K = 0.5 - 16$

Shank	$\phi d \times l$	No.	ϕA	B	C	G
Cylindrical Fig. 9	$\frac{3}{4}'' \times 30$	38-3053	-	48	42	-
	$\frac{3}{4}'' \times 50$	38-3054	-	48	42	-
	20 x 30	38-3055	-	48	42	-
	20 x 50	38-3056	-	48	42	-
	25 x 50	38-3057	-	48	42	-
	1" x 50	38-3058	-	48	42	-
1 $\frac{1}{4}'' \times 60$	38-3060	-	48	42	-	
VDI 3425 Fig. 10	20 x 40	38-3064	50	58	53	-
	30 x 55	38-3065	68	57	68	-
with flat	20 x 50	38-3086	-	48	42	-
	25 x 50	38-3087	-	48	42	-
	32 x 60	38-3088	-	48	42	-
DIN 69 871A Fig. 11	SK 40	38-3286	63.5	60	60	M16

Collets capacities (Fig. B)

No.	ϕD	No.	ϕD
38-3610	$\phi 1-0.5$	38-3780	$\phi 8-7$
38-3615	$\phi 1.5-1$	38-3790	$\phi 9-8$
38-3620	$\phi 2-1.5$	38-3700	$\phi 10-9$
38-3625	$\phi 2.5-2$	38-3710	$\phi 11-10$
38-3630	$\phi 3-2.5$	38-3720	$\phi 12-11$
38-3640	$\phi 4-3$	38-3730	$\phi 13-12$
38-3650	$\phi 5-4$	38-3740	$\phi 14-13$
38-3660	$\phi 6-5$	38-3750	$\phi 15-14$
38-3670	$\phi 7-6$	38-3760	$\phi 16-15$

Set collets	No.	ϕD
18 collets as per list (38-3610 to 38-3760)	38-3500	$\phi 1-0.5$ to $\phi 16-15$

Fig. 9

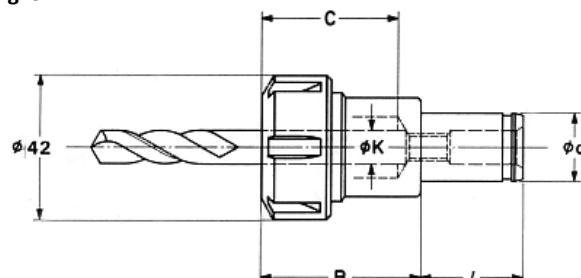


Fig. 10

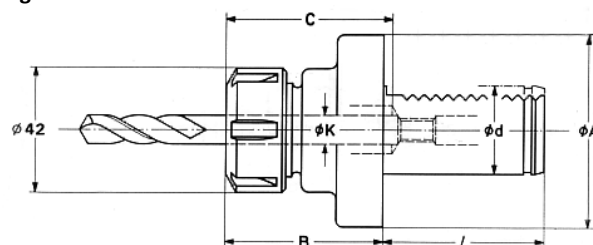


Fig. 11

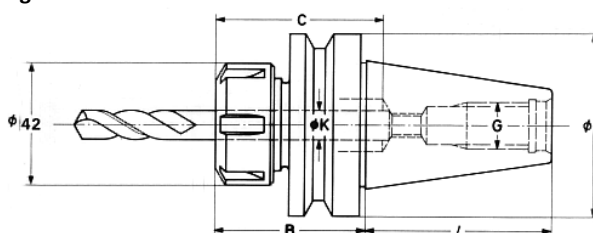
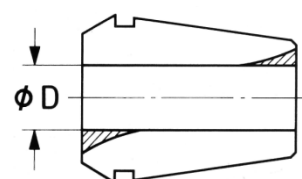


Fig. B



Collet chucks Type ESX 32 (ER 32) – Gripping capacity $\emptyset K = 0.5 - 16$

Shank	$\emptyset d \times l$	No.	$\emptyset A$	B	C	G
Cylindrical Fig. 13	25 x 50	38-4057	-	55	50	-
	1" x 50	38-4058	-	55	50	-
	30 x 60	38-4059	-	55	50	-
	1 1/4" x 60	38-4060	-	55	50	-
	40 x 70	38-4062	-	55	50	-
VDI 3425 Fig. 14	20 x 40	38-4064	50	63	57	-
	30 x 55	38-4065	68	63	57	-
	40 x 63	38-4066	83	63	57	-
	50 x 78	38-4067	98	63	57	-
with flat	25 x 50	38-4087	-	55	50	-
	40 x 70	38-4089	-	55	50	-
BT Fig. 15	BT 40	38-4266	63	70	60	M16
DIN 69 871A Fig. 15	SK 40	38-4286	63.5	70	60	M16

Collets capacities (Fig. B)

No.	$\emptyset D$	No.	$\emptyset D$
38-4610	$\emptyset 1-0.5$	38-4700	$\emptyset 10-9$
38-4615	$\emptyset 1.5-1$	38-4710	$\emptyset 11-10$
38-4620	$\emptyset 2-1.5$	38-4720	$\emptyset 12-11$
38-4625	$\emptyset 2.5-2$	38-4730	$\emptyset 13-12$
38-4630	$\emptyset 3-2.5$	38-4740	$\emptyset 14-13$
38-4640	$\emptyset 4-3$	38-4750	$\emptyset 15-14$
38-4650	$\emptyset 5-4$	38-4760	$\emptyset 16-15$
38-4660	$\emptyset 6-5$	38-4770	$\emptyset 17-16$
38-4670	$\emptyset 7-6$	38-4780	$\emptyset 18-17$
38-4780	$\emptyset 8-7$	38-4790	$\emptyset 19-18$
38-4790	$\emptyset 9-8$	38-4800	$\emptyset 20-19$

Set collets	No.	$\emptyset D$
22 collets as per list (38-4610 to 38-4800)	38-4500	$\emptyset 1-0.5$ to $\emptyset 20-19$

Fig. 13

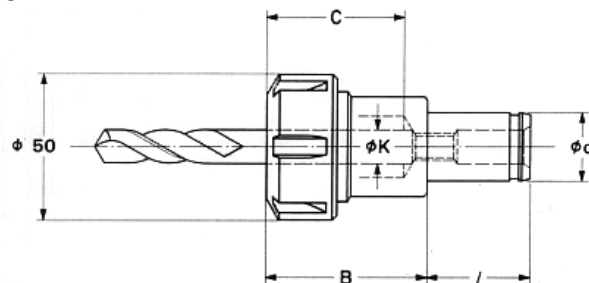


Fig. 14

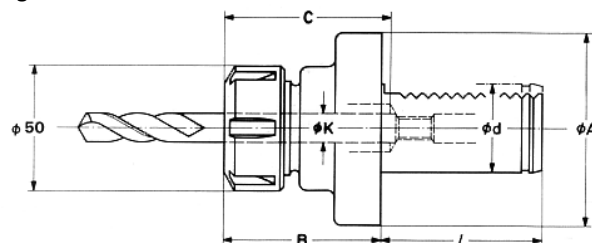


Fig. 15

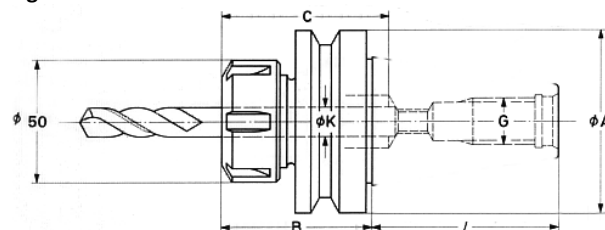


Fig. 16

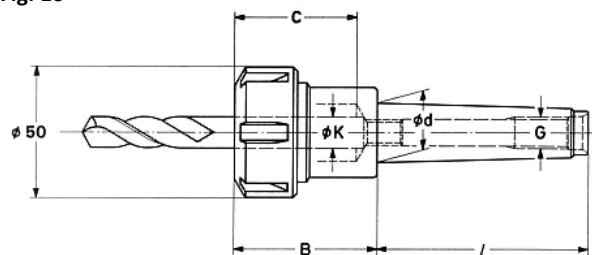


Fig. B

